

# Beyond Epitope Mapping:

Using Deep Mutational Scanning to Generate a Complete Map of SARS-CoV-2 Diagnostic Antibody Escape Mutations

POCTRN Webinar

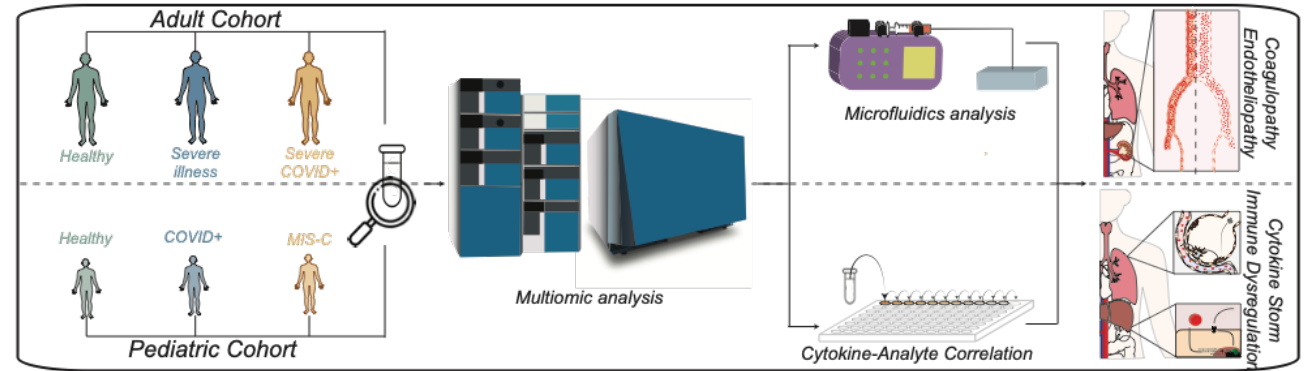
04/19/2022

Filipp Frank

Eric Ortlund

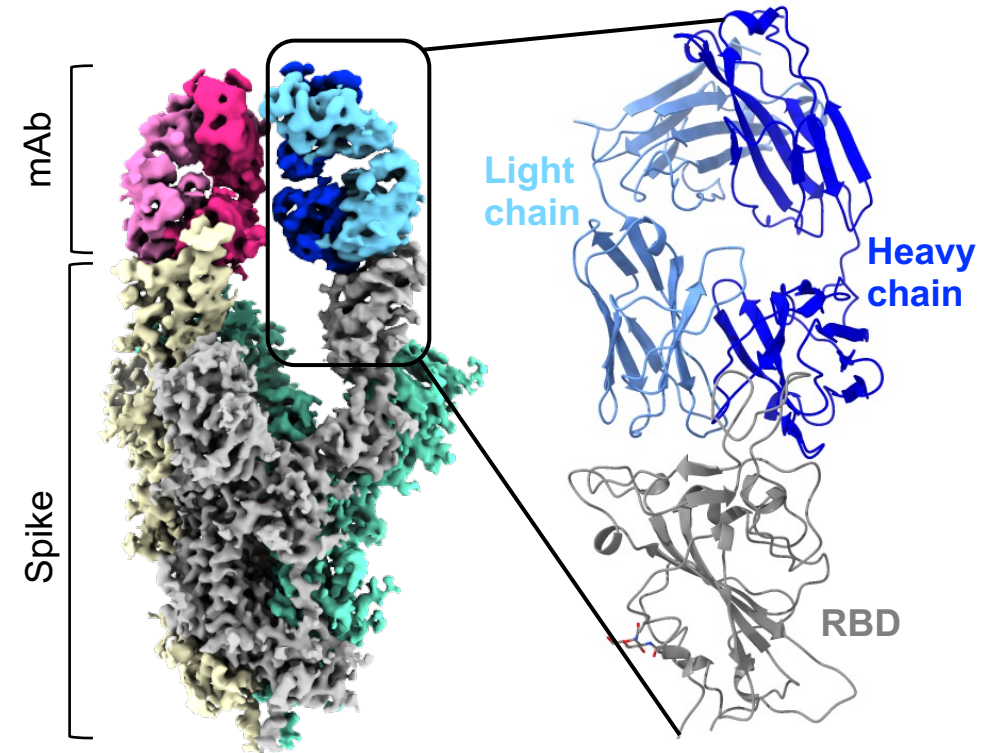
# Ortlund lab

Multi-omics to discover pathways driving disease and immune response



Mechanistic and biochemical studies on SARS-Cov-2 proteins to support Emory's efforts to develop in house molecular tests

CryoEM to determine the mechanism of action for antibodies that neutralize SARS-CoV-2



# RADx Tech

## Overarching Goal

---

Establish a robust pipeline of innovative diagnostic technologies to **increase national testing capacity**

## Innovate Across the Testing Landscape

---

Expand the number, type, access, and throughput of testing technologies

## Optimize Technology Performance

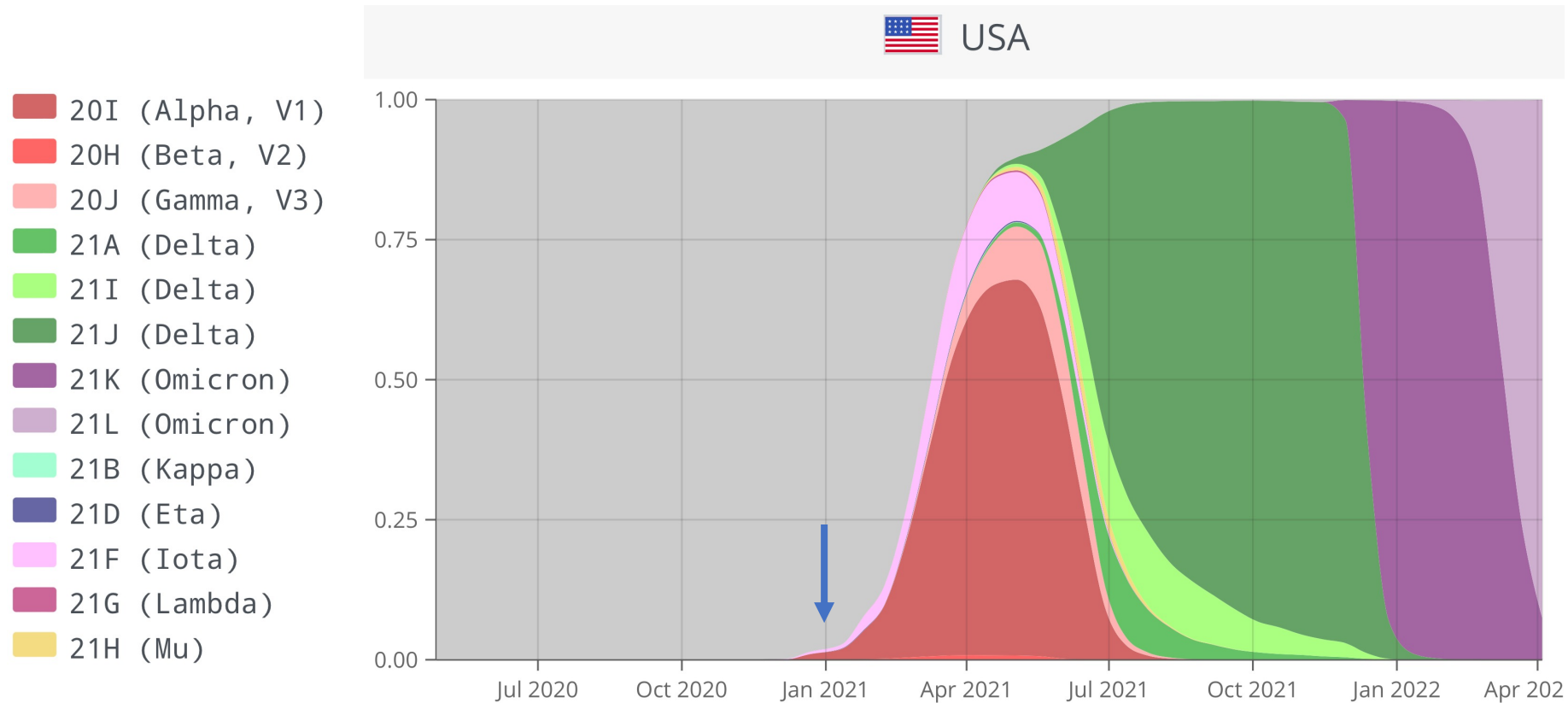
---

Develop technology for a range of essential “Use Cases”

- At-home
- Point of Care (POC)
- Hospital
- Testing Laboratory



# The emergence of SARS-CoV-2 Variants





# Overview: RADx Variant Task Force

## Established January 2021

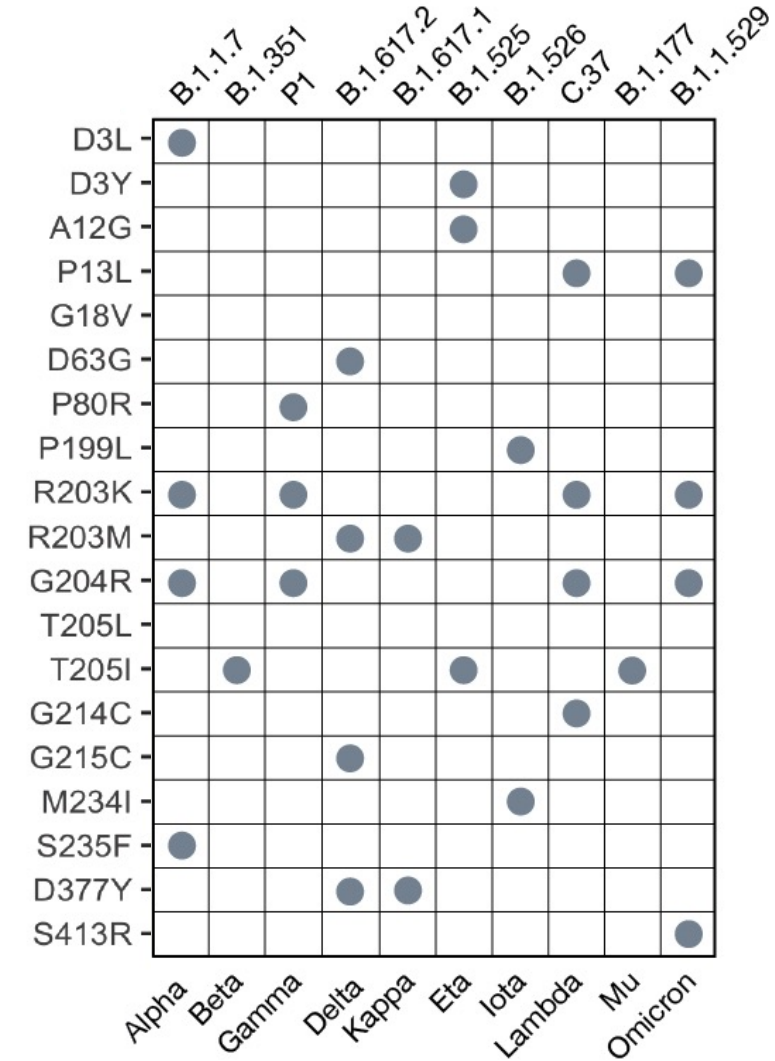
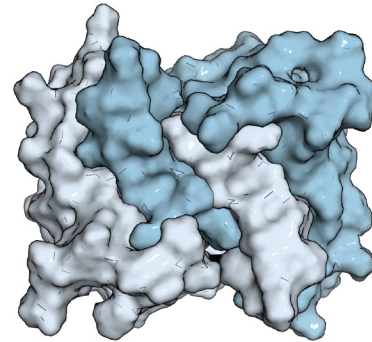
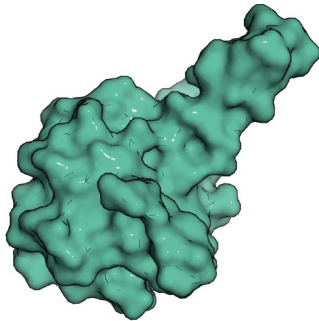
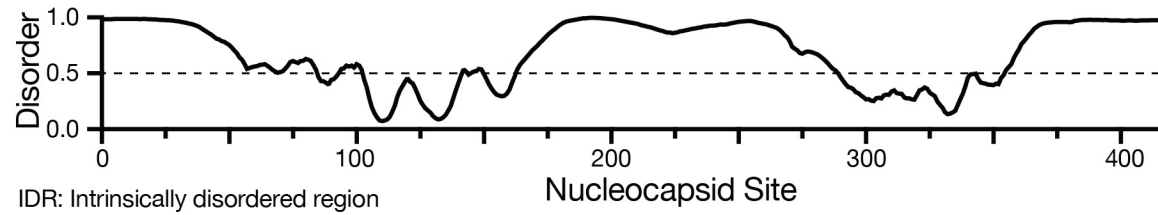
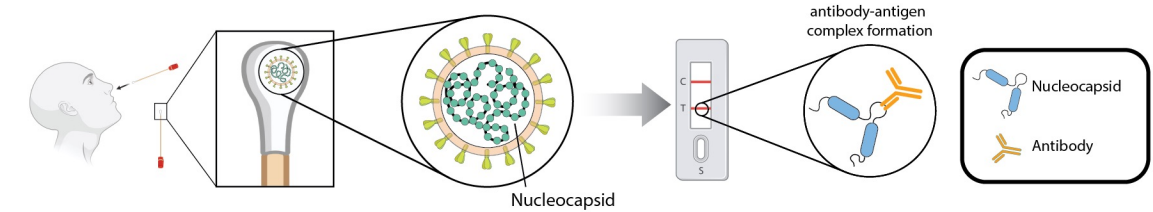
The RADx Variant Task Force is a cross-discipline and cross-organization group of scientists and industry leaders with expertise in virology and diagnostic testing.

## Objective

Rapidly analyze whether the performance of any of RADx's portfolio of diagnostic tests were affected by the mutations in the new variants.



# Antigen tests target the SARS-CoV-2 Nucleocapsid protein



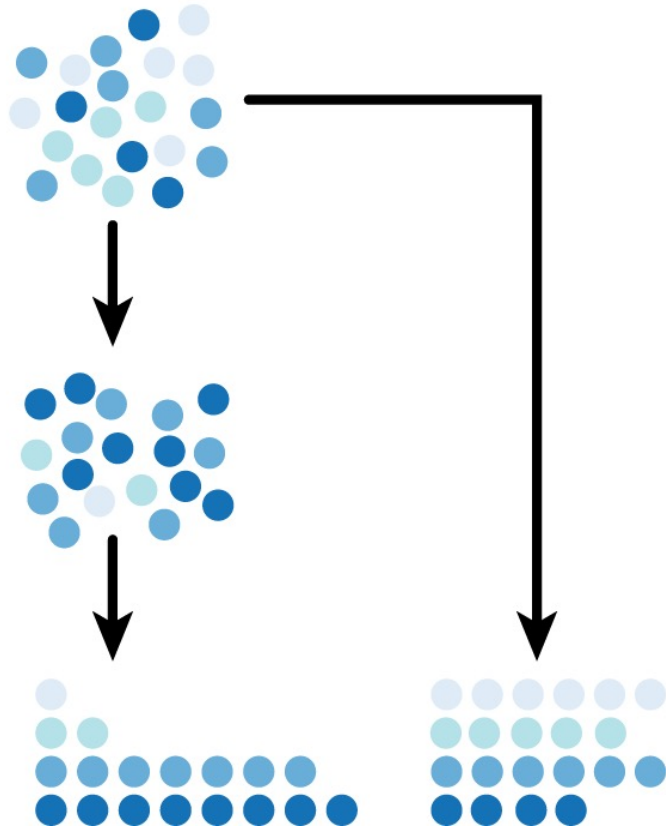
# Epitope mapping approaches

- Structural approaches (crystal structures, cryo-EM)
- Peptide-based approaches
- Site-directed mutagenesis (e.g. alanine scanning)

**But:** No direct measurement of the effect of mutations

# Deep mutational scanning

1. Mutational library



2. Select

3. Count

Selection methods:

- Cell growth
- Viral passaging/fitness
- Cellular signaling
- ...
- **Surface-display and FACS**

Pioneered at University of Washington:

Fields lab: Fowler *et al.*, Nat Methods, 2010 & 2014

Bloom lab: **Starr *et al.*, Cell, 2020**

...



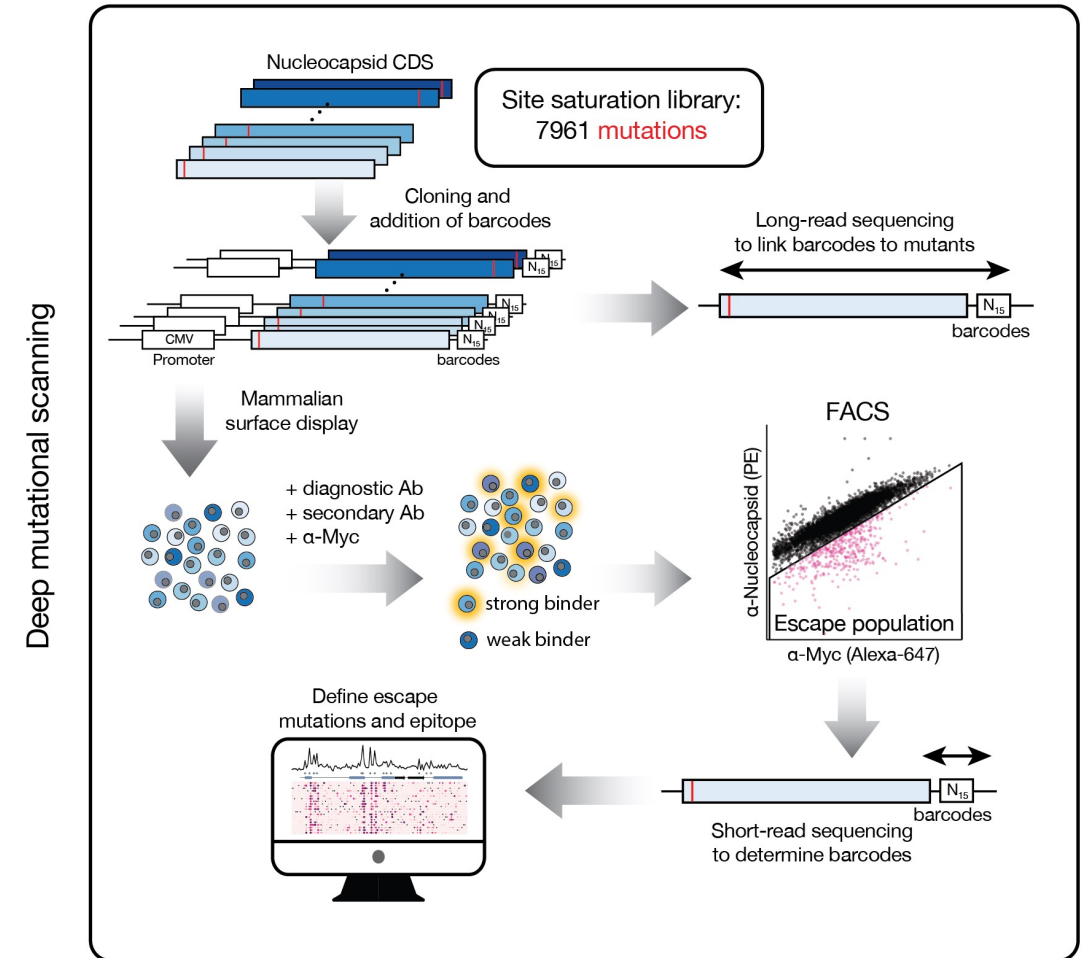
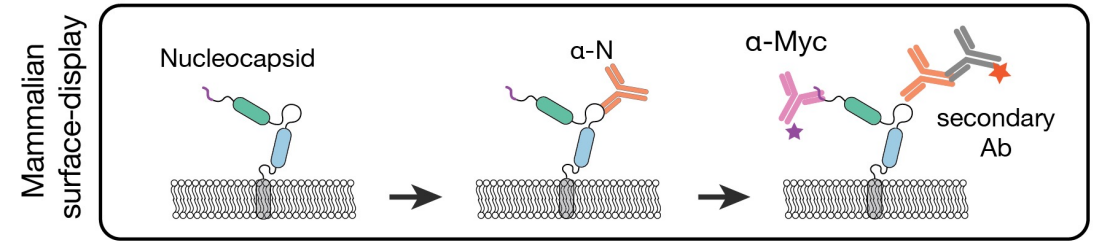
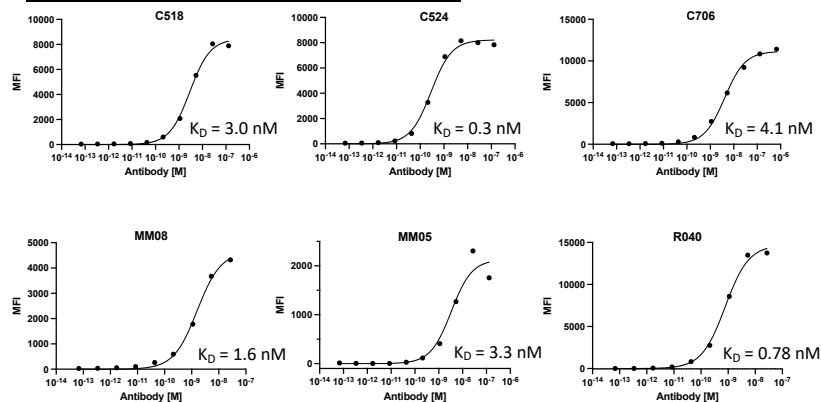
EMORY  
UNIVERSITY

# Mammalian surface-display combined with deep mutational scanning

## Advantages of this approach:

- (i) Full coverage of all **past, present, or future mutations** found in variants
- (ii) Direct measurement of antibody-antigen interactions in the context of **functionally folded, full-length N protein**
- (iii) Accurate detection of **linear and three-dimensional epitopes** (and more!)

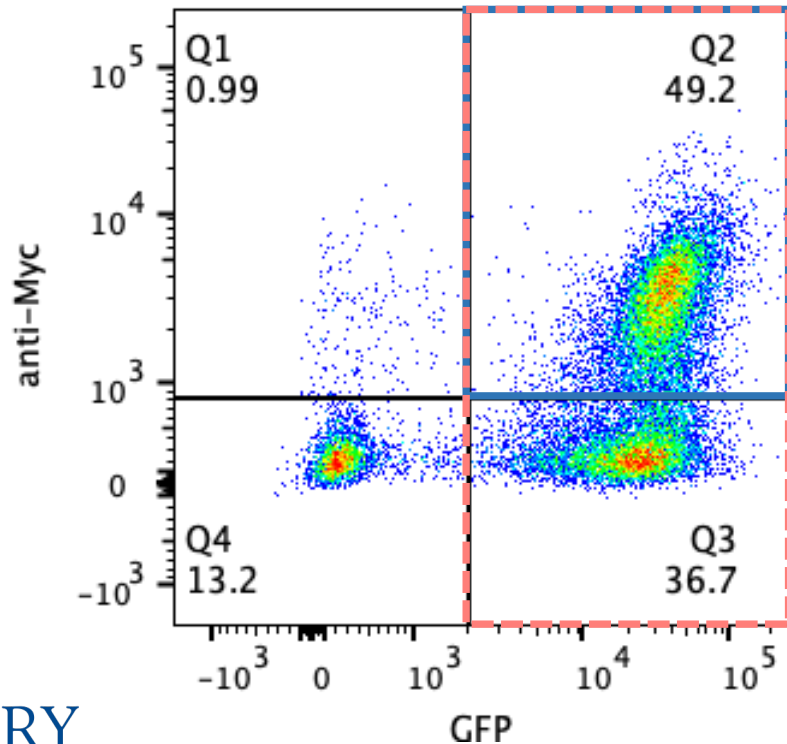
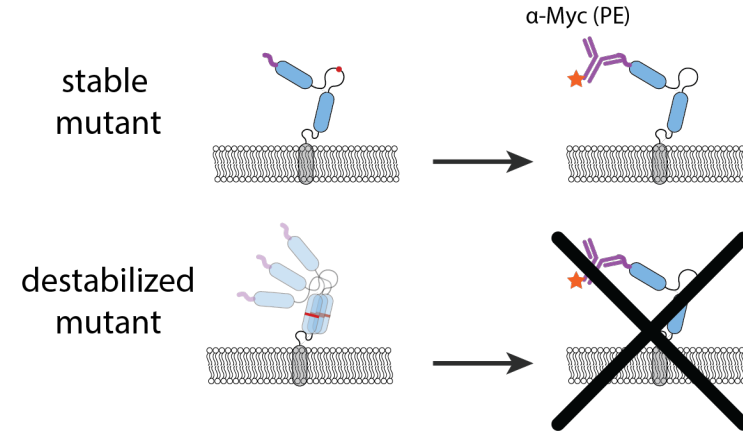
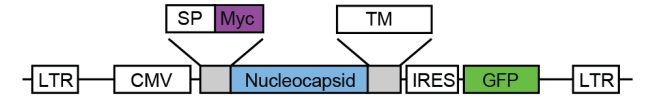
### Test binding to Wuhan N:



# Library generation procedure

1. Generate lentiviral library
2. Infect HEK293 cells
3. Sort GFP<sup>+</sup> cells (infected)
4. Sort Myc<sup>+</sup> cells

Lentiviral expression construct:



All possible, **functionally folding** Nucleocapsid protein mutations

All possible Nucleocapsid protein mutations

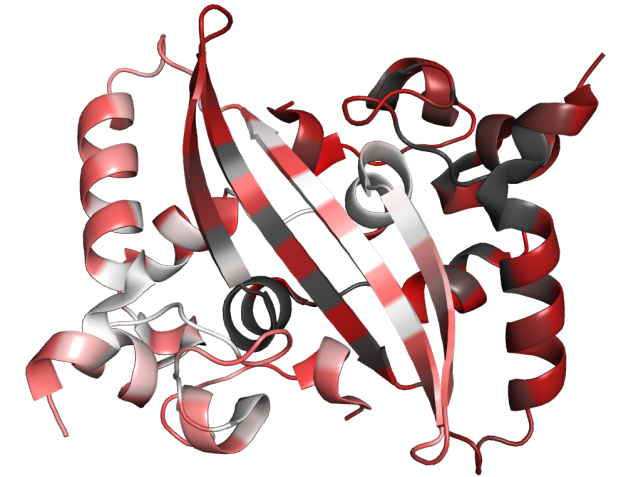
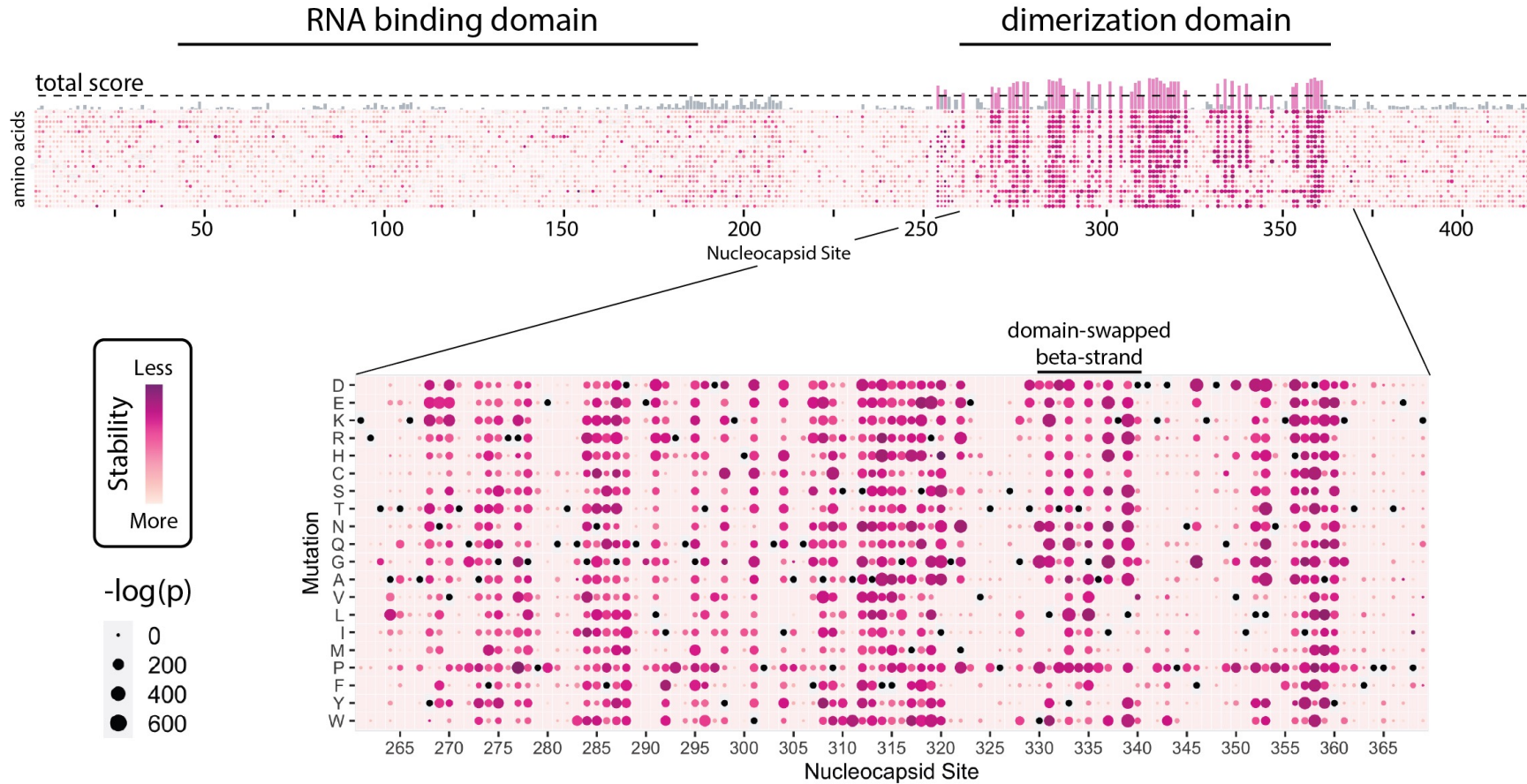
$$ER_i = \frac{n_{i,selected} / N_{selected}}{n_{i,input} / N_{input}}$$

ER<sub>i</sub>: enrichment ratio of variant i

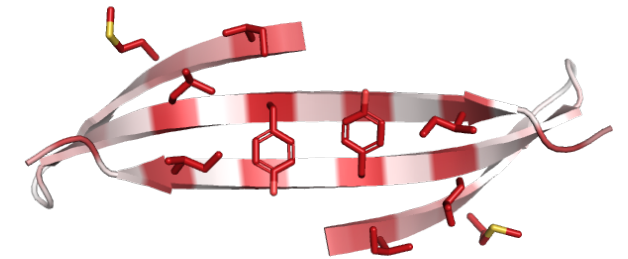




# A high-throughput protein folding experiment



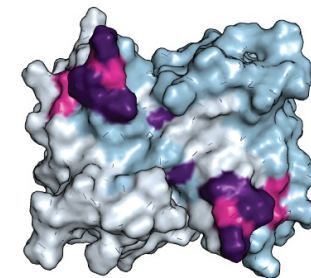
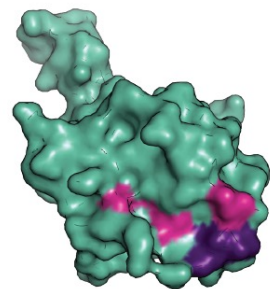
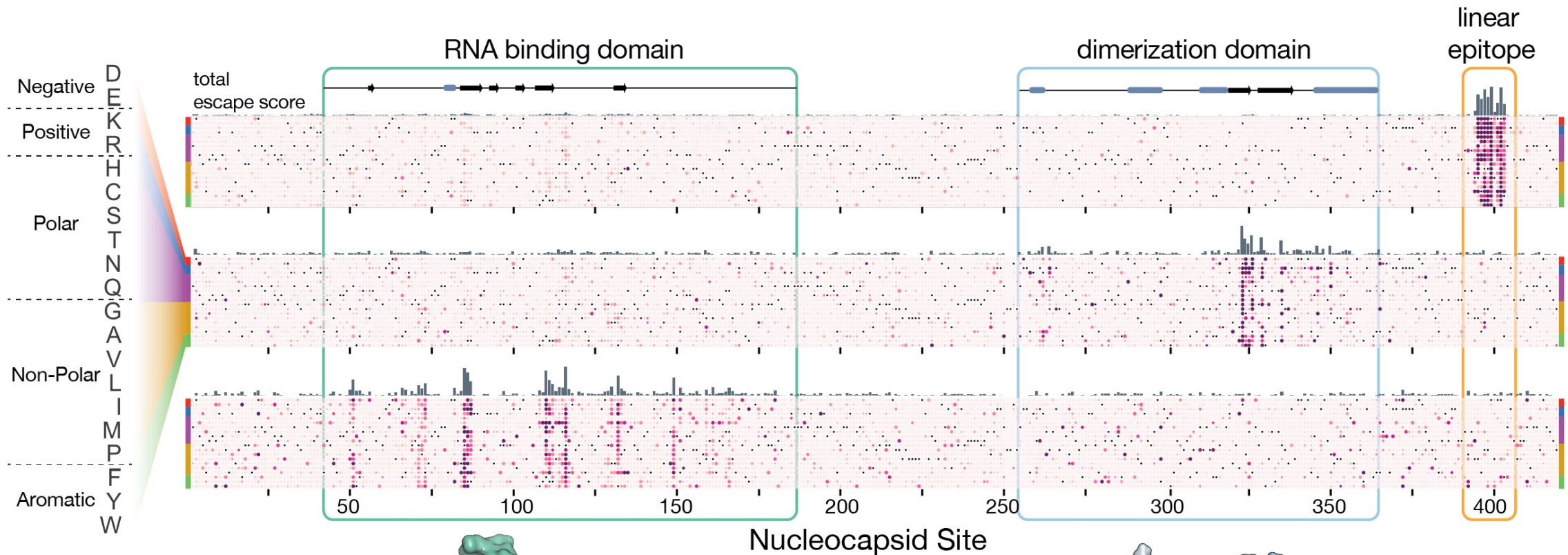
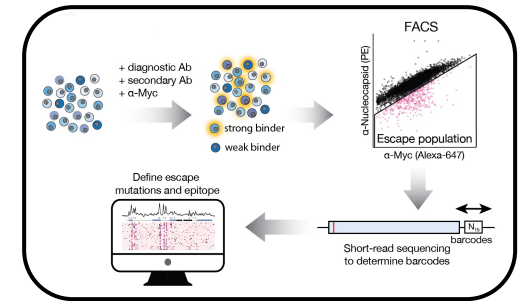
Protein side:



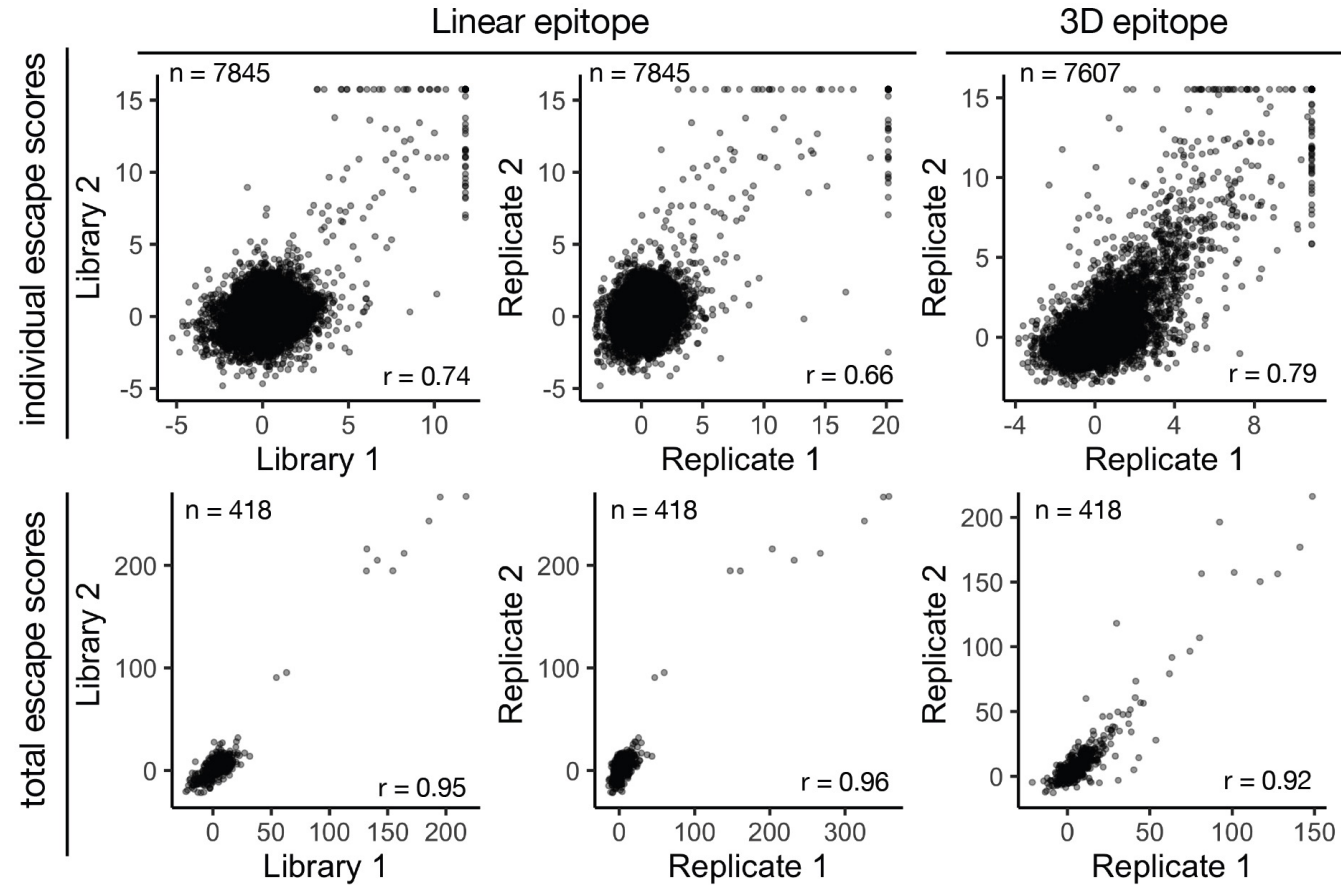
Solvent side:



# Detailed escape mutation maps of linear and 3-dimensional epitopes



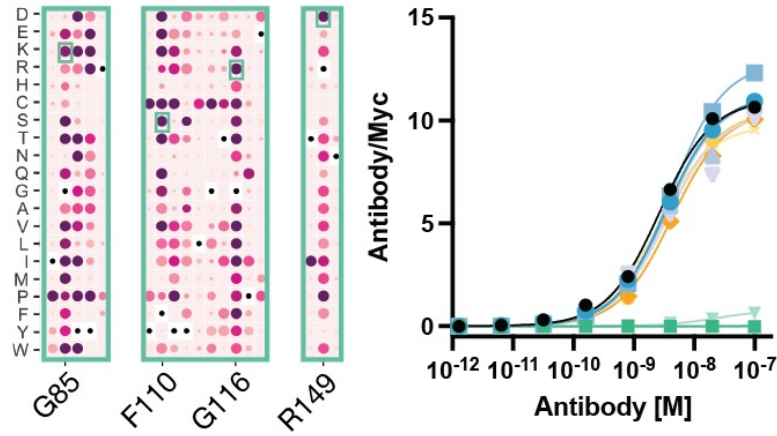
# Method validation – replicate comparisons



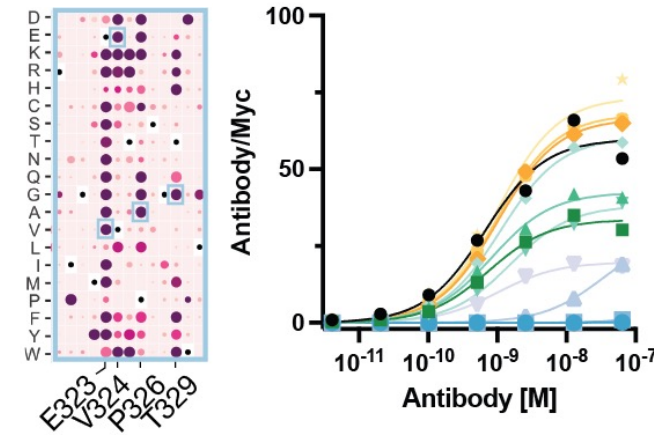


# Method validation – individual mutations

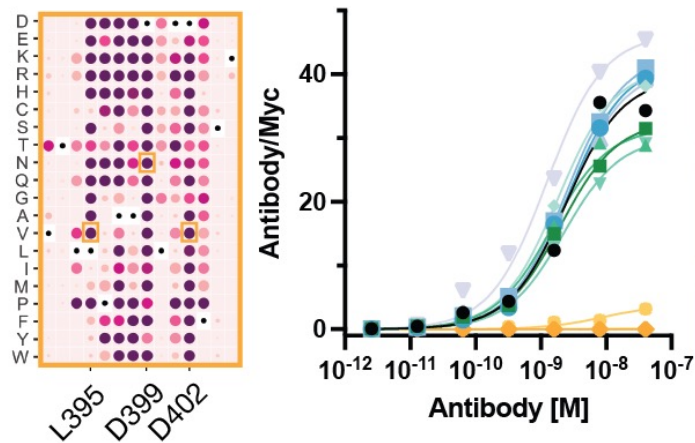
## 3D epitope – RNA-binding domain



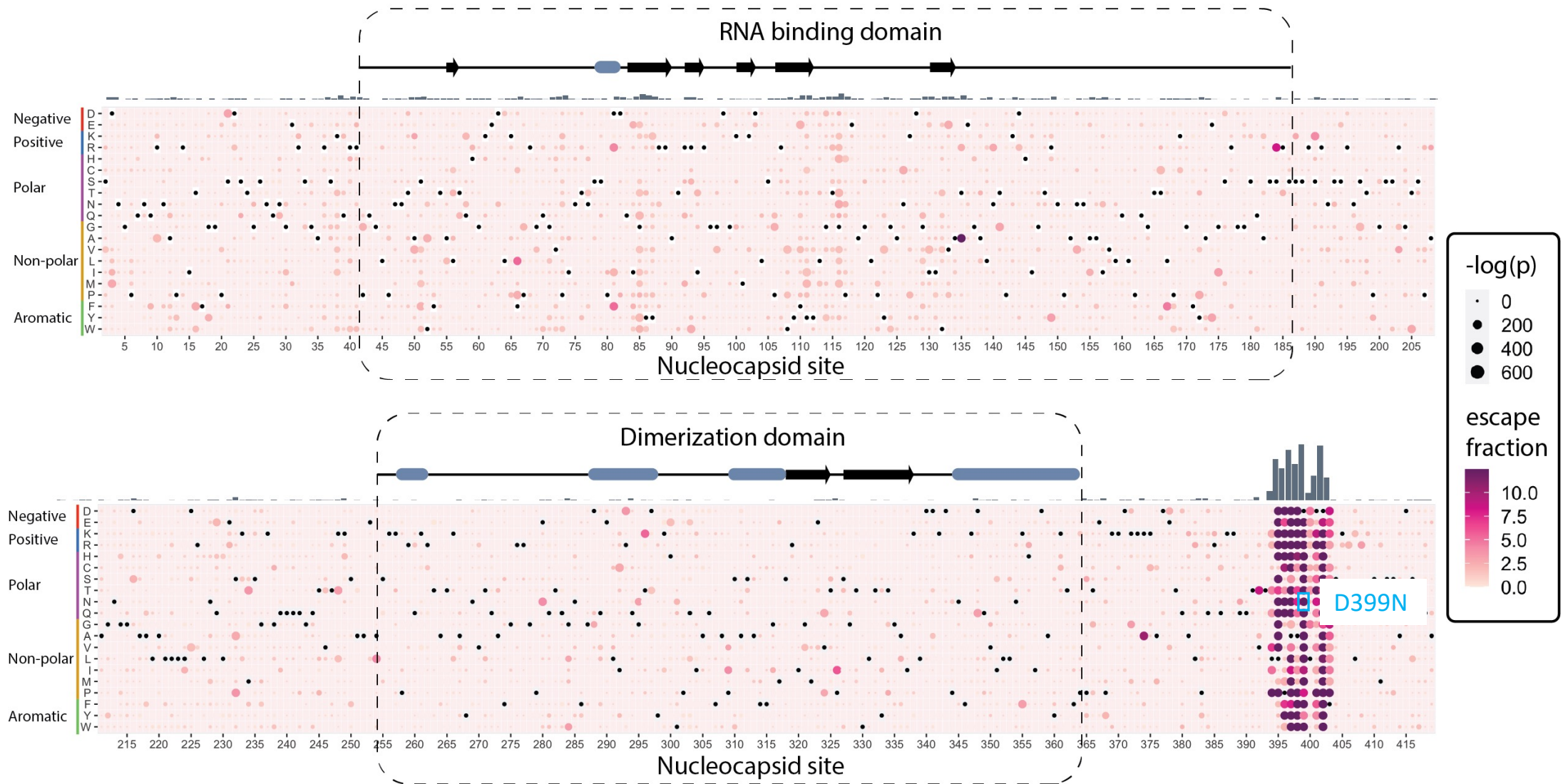
## 3D epitope – Dimerization domain



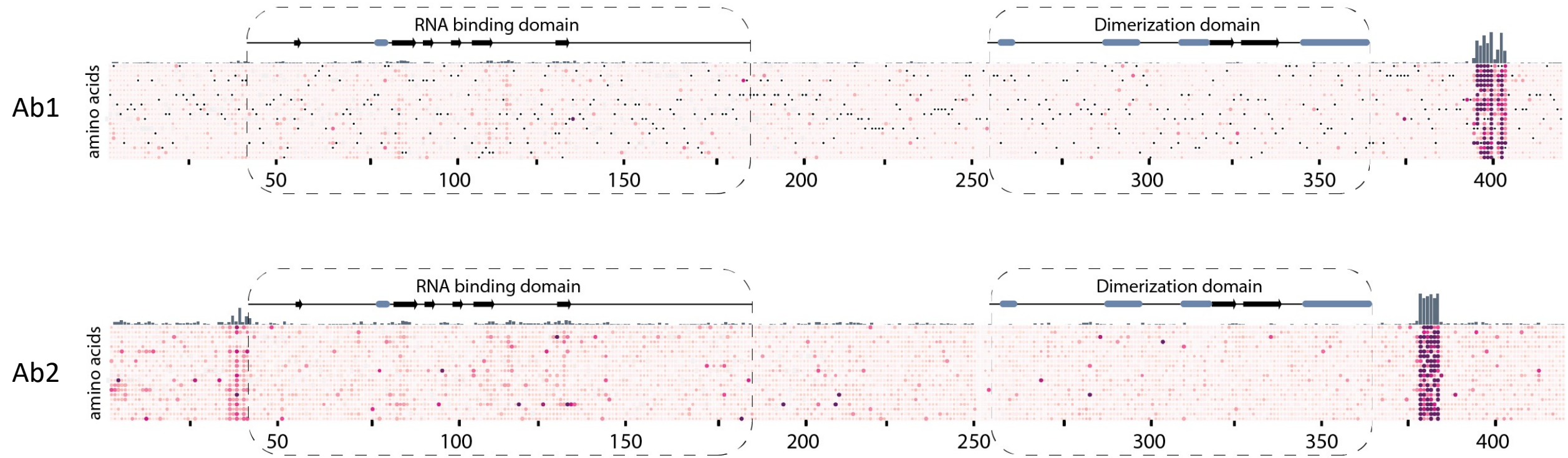
## Linear epitope



# A linear epitope at the C-terminus is highly sensitive to mutations

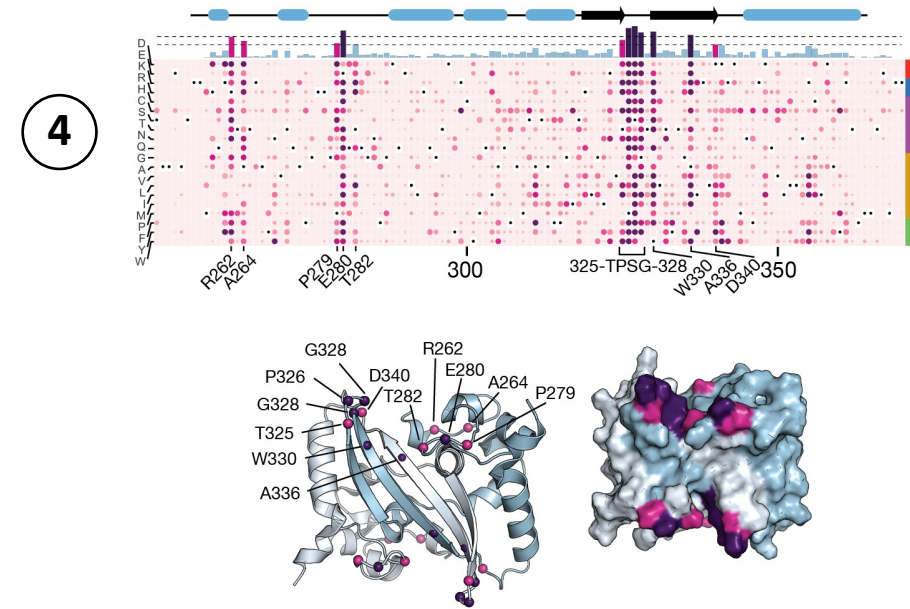
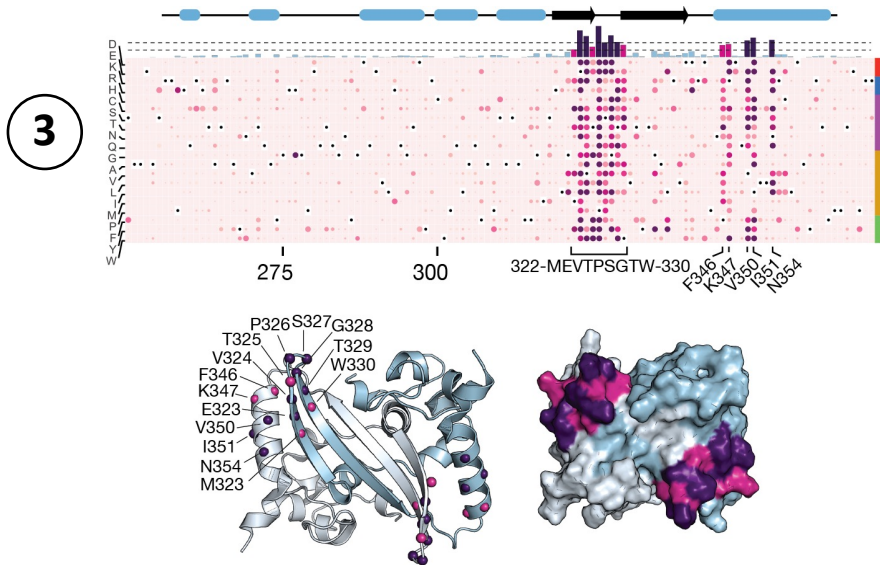
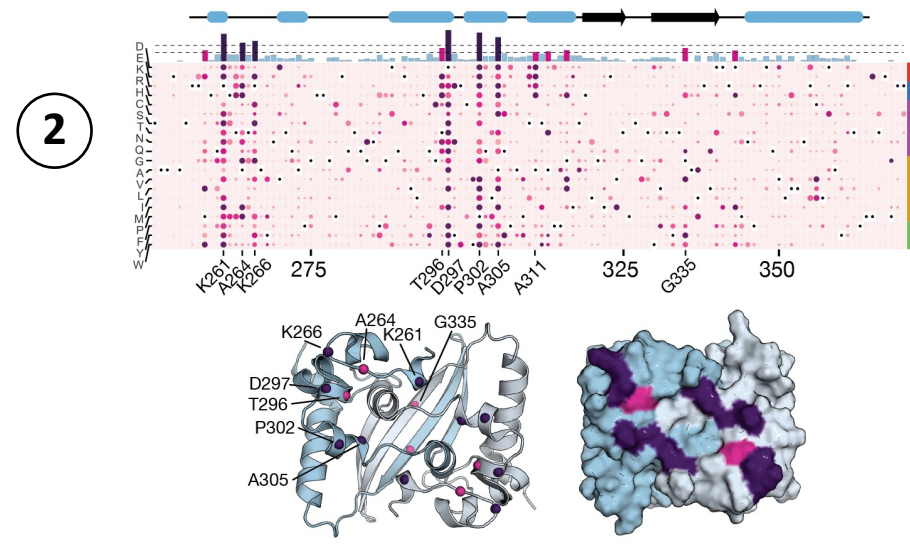
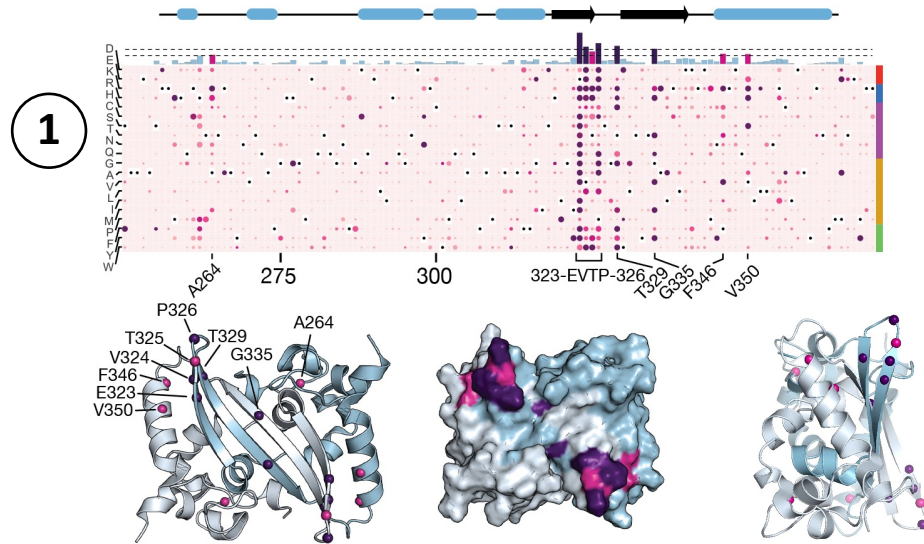


# Linear epitopes are highly sensitive to mutations within the epitope

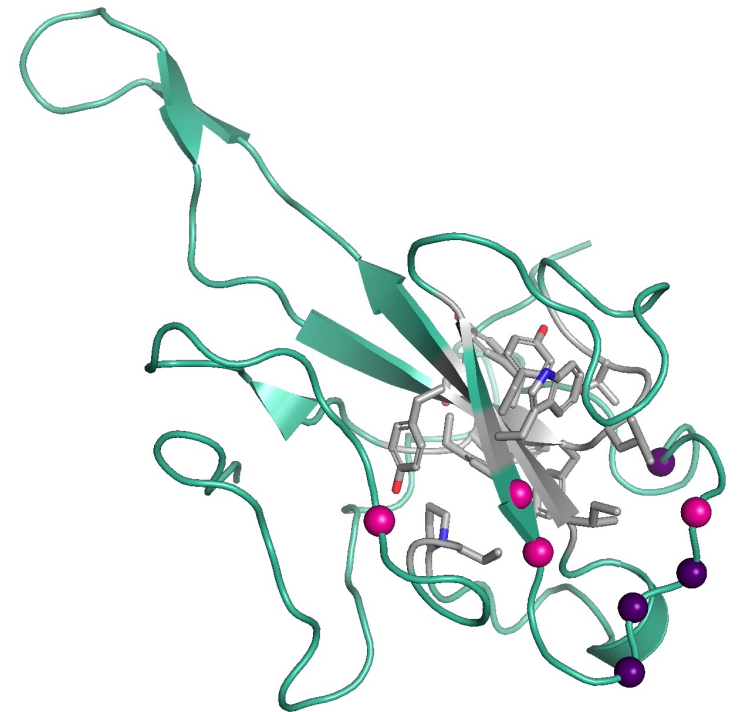
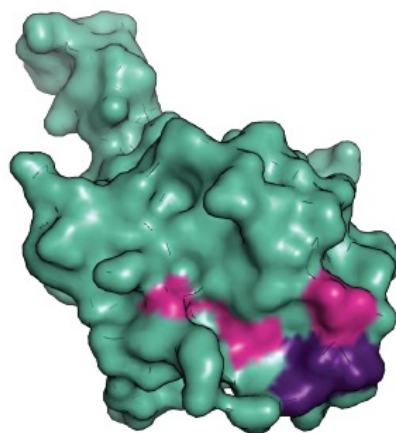
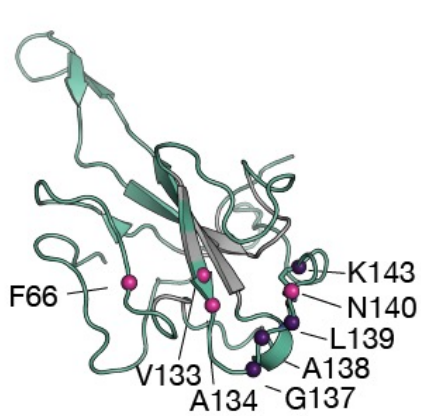
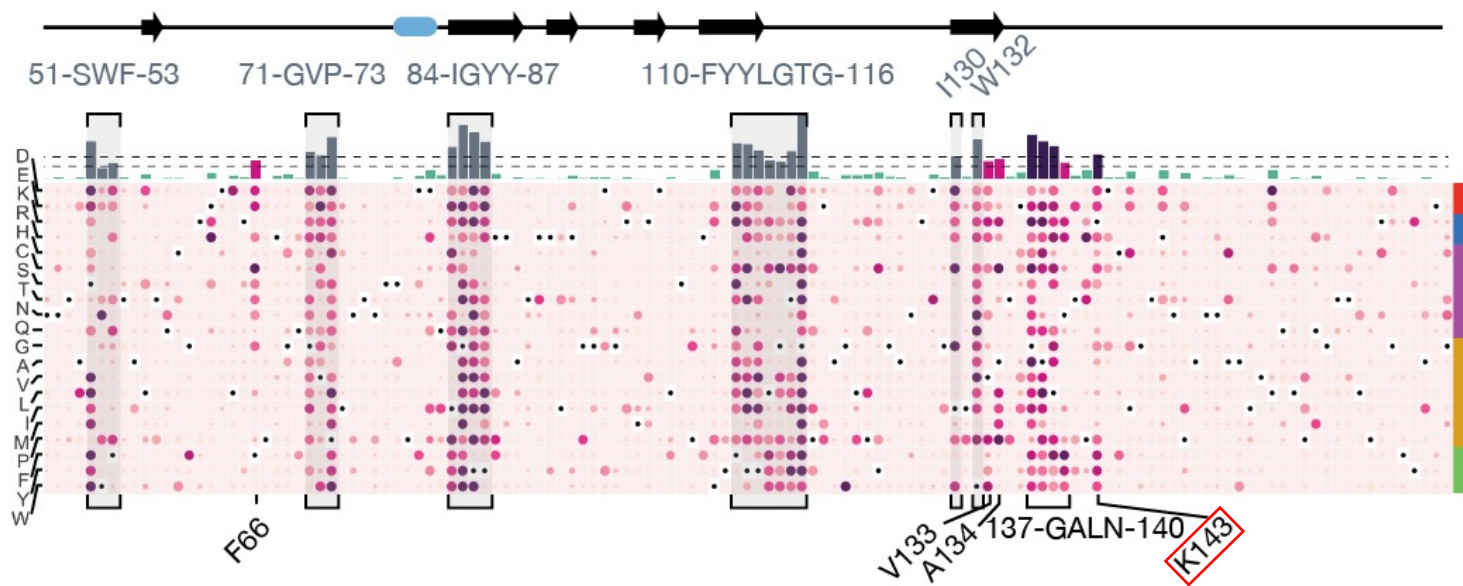




# Three-dimensional epitopes in the dimerization domain



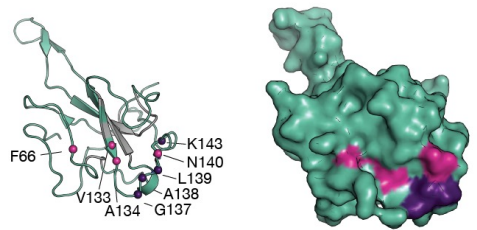
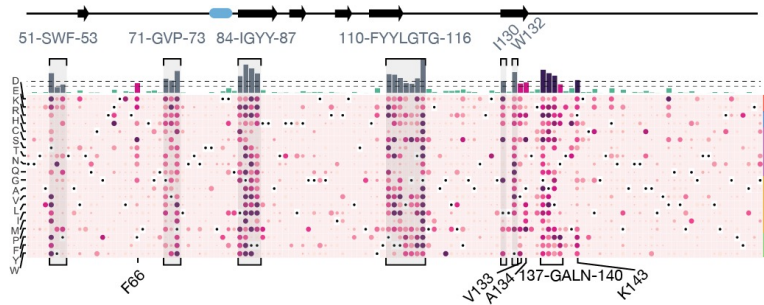
# Three-dimensional epitopes in the RNA-binding domain



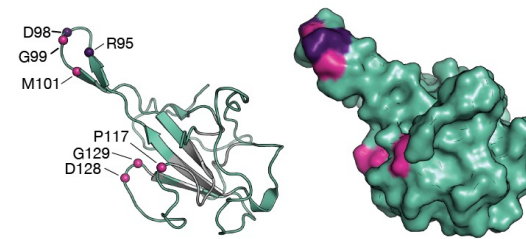
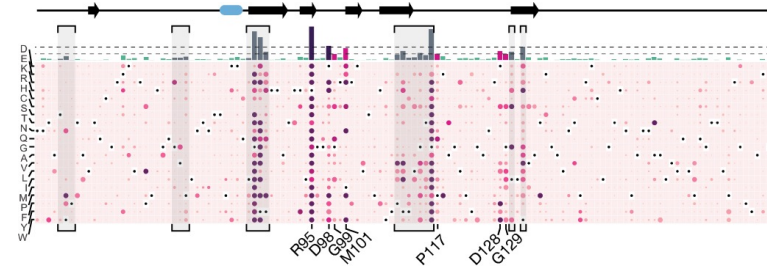


# Three-dimensional epitopes in the RNA-binding domain

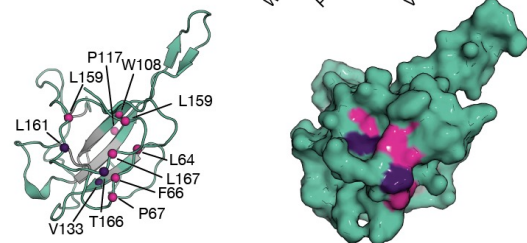
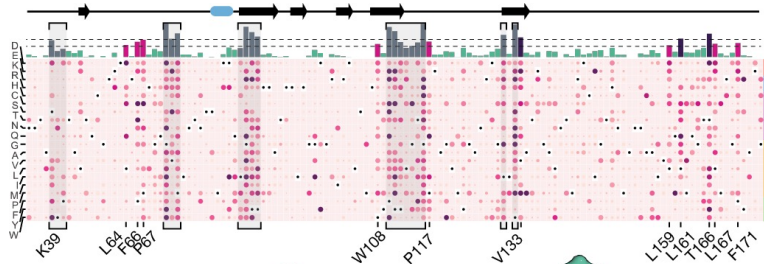
1



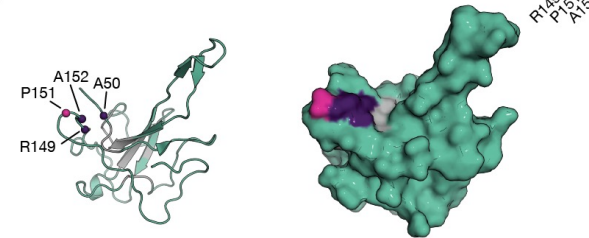
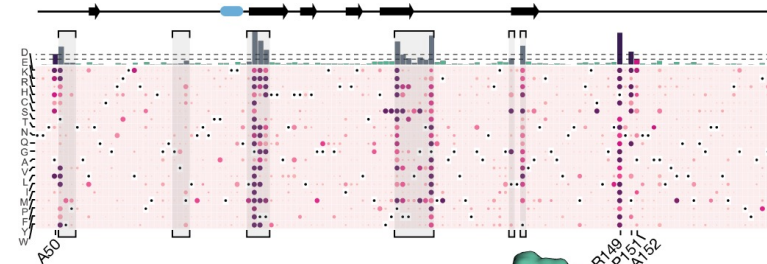
2



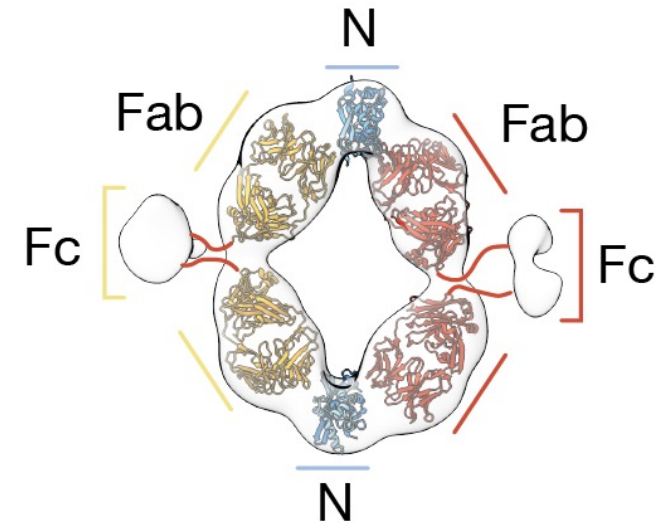
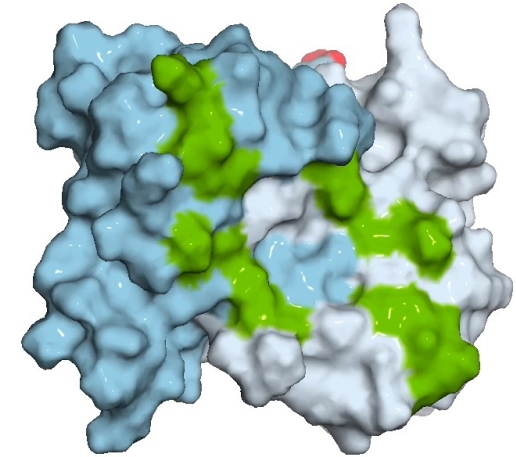
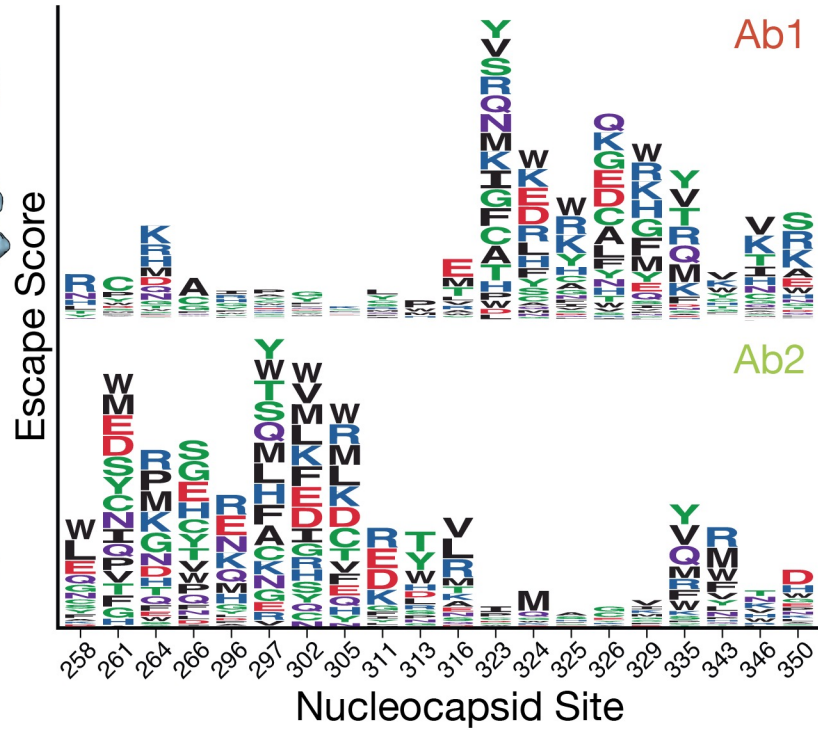
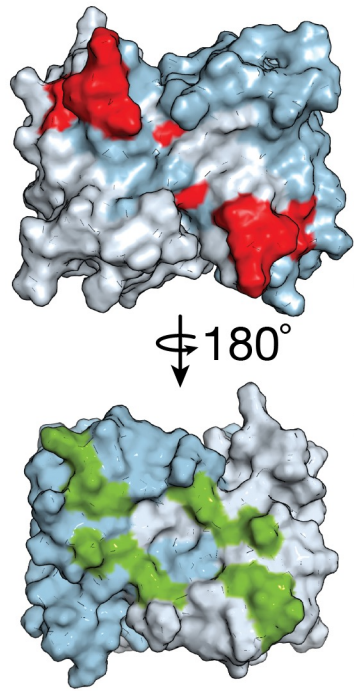
3



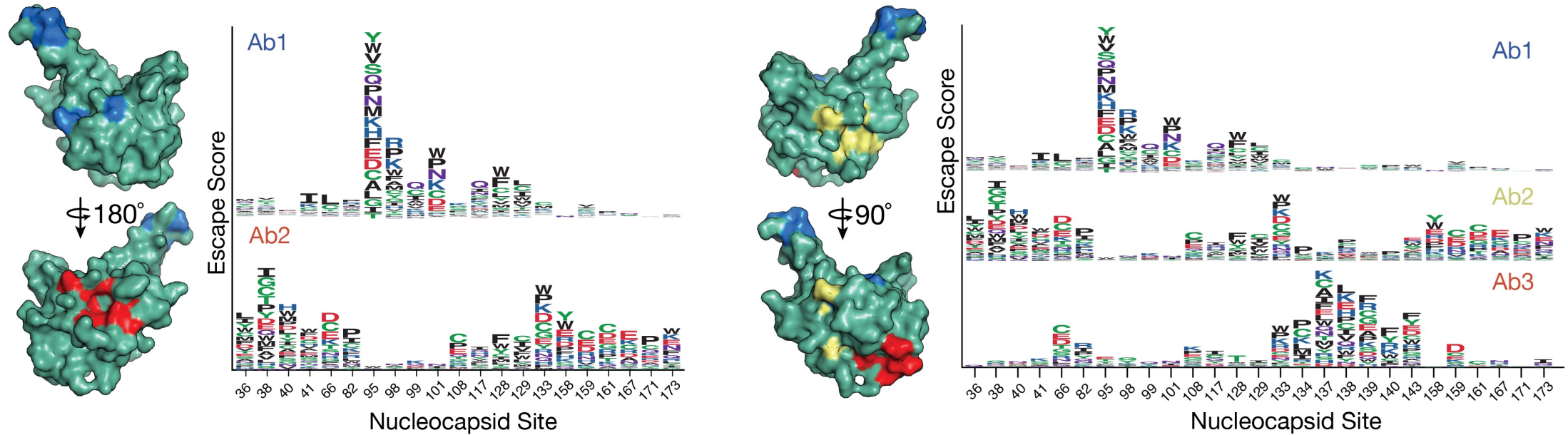
4



# Diagnostic antibody combinations target spatially separated epitopes

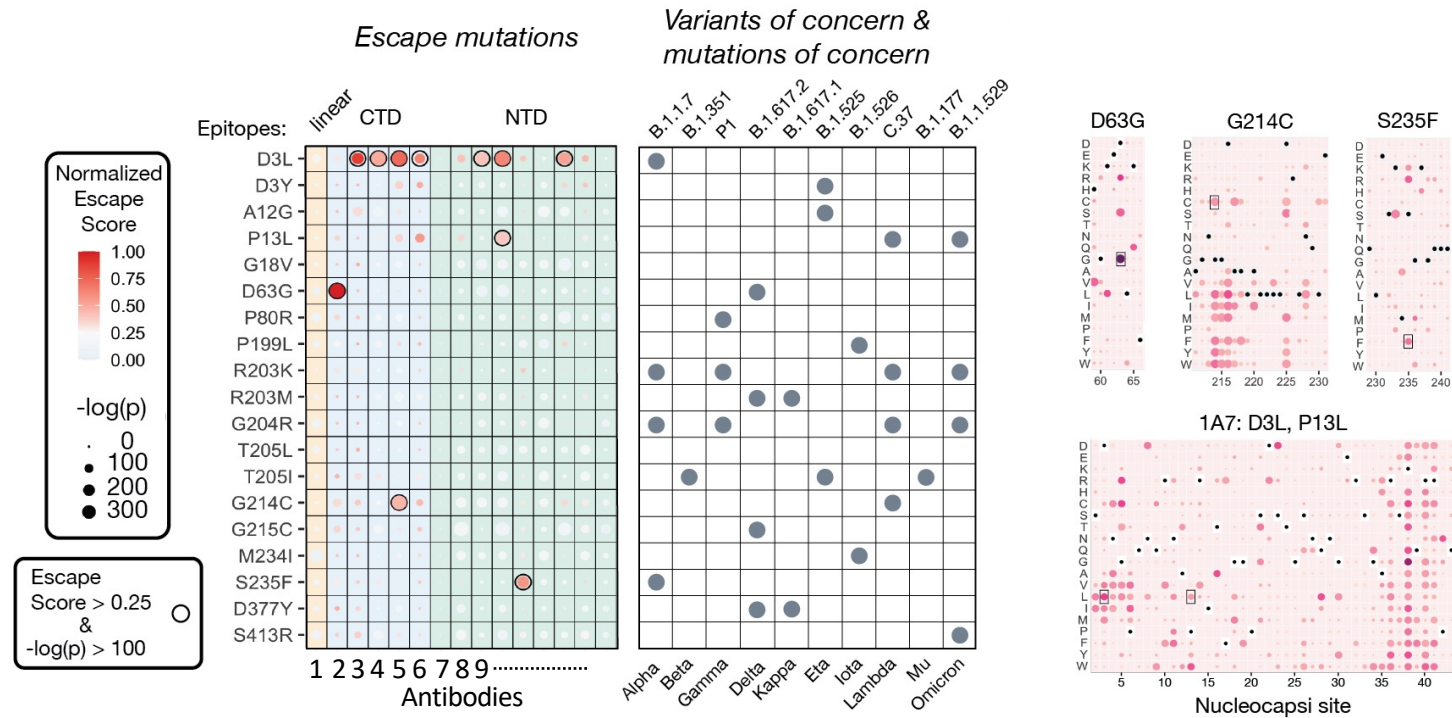


# Diagnostic antibody combinations target spatially separated epitopes





# Antibody performance against mutations of concern





# Acknowledgements



## Ortlund Lab

M.L. Cato  
Andre Cuevas  
Jen Colucci, Ph. D.  
Sam Druzak  
Zhenxin Hou, Ph. D.  
**Meredith Keen**  
Xu Liu, Ph. D.  
**Anamika Patel, Ph.D.**  
Racheal Spurlin

## Rafi Ahmed Lab

William Hudson



## Emory Core Facilities

Emory Flow Cytometry Core  
Pediatrics/Winship Flow Cytometry Core  
Yerkes Genomics Core

## RADx Variant Task Force

### RADX

John Blackwood  
Mia Cirrincione  
**Richard Creager**  
Dale Gort  
**Emily Kennedy**  
**Eric Lai**  
D'lynn Plummer  
Thomas Pribyl  
Adam Samuta  
Megan Shaw  
Brian Walsh

### Emory University

Leda Bassit  
Morgan Greanleaf  
**Wilbur Lam**  
Cangyuan Li  
Anuradha Rao  
Raymond Schinazi  
Allie Suessmith  
**Julie Sullivan**  
Thomas Vanderford

### Federal Agency Collaborators

BARDA  
CDC  
DOD  
DOE  
FDA  
NIH (NIBIB, NCBI)

### University of Washington

Alex Greninger

